

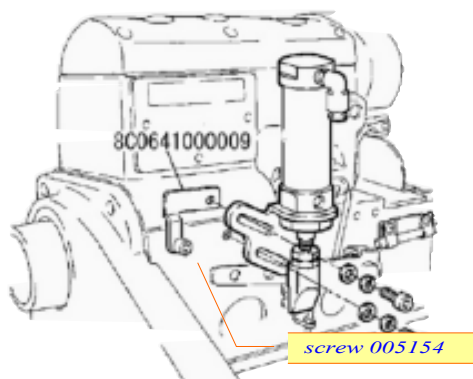
MX - Series

Bracket for PL and TK of MX

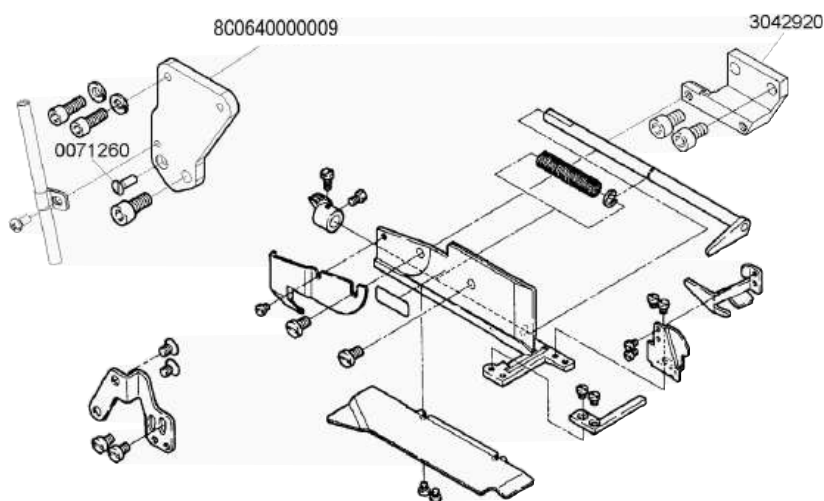
We use a bracket for PL and TK to adopt the PL and TK of EX-series to MX-series. This is a temporary solution.

Bracket for PL of MX32/52

For MX32/52 we use the PL020 of EX-series and add above bracket 8C06410 and the screw 005154 to adopt the PL020 to MX-series.



Bracket for TK of MX32/52



Following parts are additionally required:

- 1 x bracket 8C06400
- 3 x screw 007126
- 1 x bracket 304292

By using above items it is easy to adopt the TK of EX-series to MX-series. This is a temporary solution.

The bracket + screw are available ex PE.